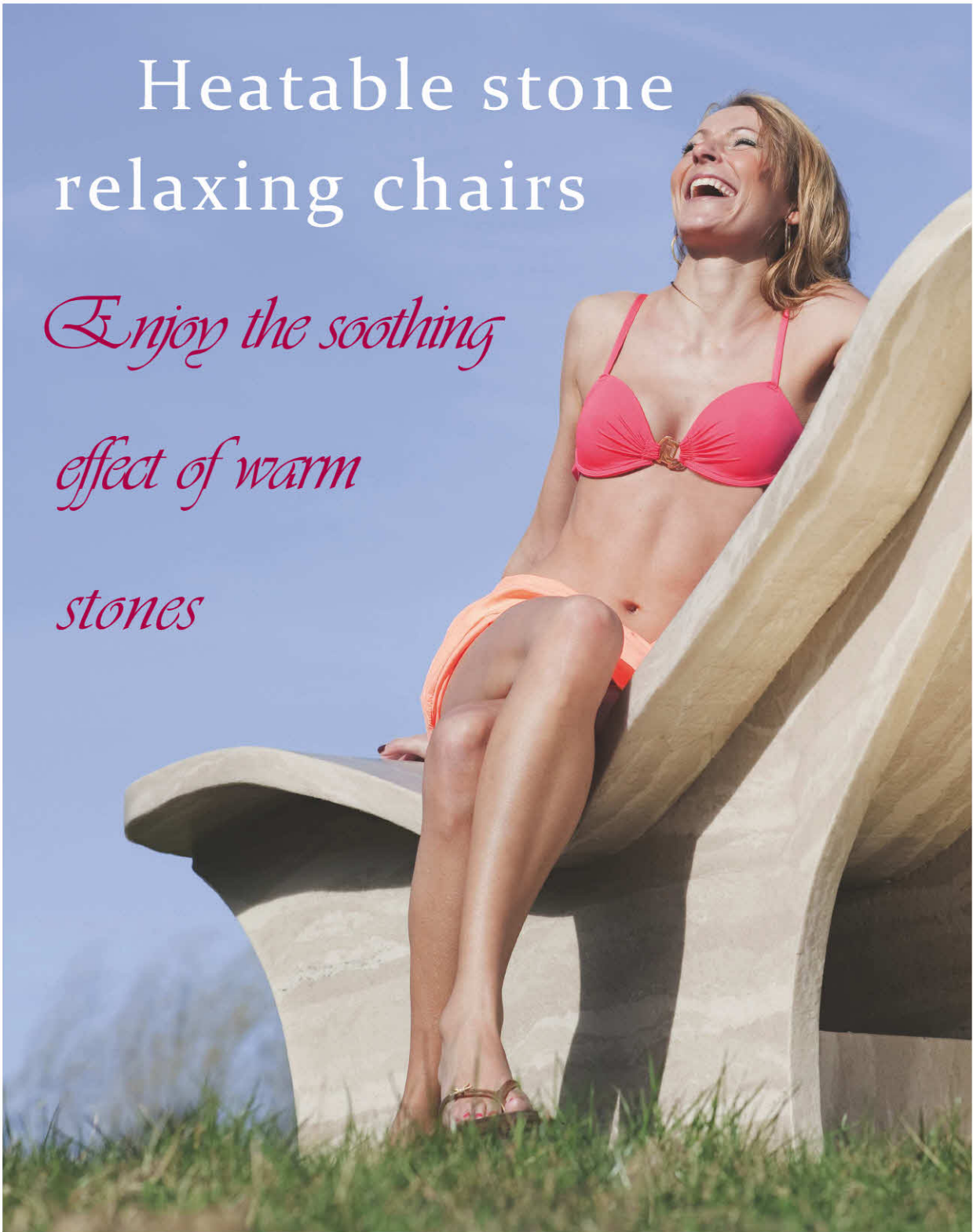


Heatable stone relaxing chairs

*Enjoy the soothing
effect of warm
stones*



product information

our Material...



Mineralit is the brand name for a material that is also known in the trade as mineral casting. It consists of approx. 94 % natural quartz sand. This means that this material is initially basically a mineral conglomerate.

Mineral conglomerates are basic materials of the universe. They lie at our feet in the desert sands as in fertile farmland. We encounter them in the infinitely varied granite or marble as in countless, never repeating unique gemstones. Since time immemorial, man has tried to add his own artistic designs to these creations, challenged by nature's models. Since ancient Egypt, master builders and artists have been shaping, colouring and painting hewn, assembled or fired mineral structures.

heatable stone chairs

...for Aesthetics...



Mineralit heatable stone loungers are predestined for use in swimming pools and wellness areas. Their luxurious appearance and the noble sandstone surface make them a highlight in every recreation area. Mineralit can also be used to create whirl loungers that are adapted to individual conditions.

Do you have your very own idea of how your stone couch should look like? Then let us know your wishes and together we will work out a personal design for you.

In addition to the exclusive appearance, the particular advantage is that the lying surface can be heated because heating mats are incorporated under the surface. These can be adjusted to the most comfortable temperature by a temperature regulator. In this way, the positive effects of the warmth, such as muscle relaxation, stimulation of the blood circulation and general well-being, can be used optimally.

heatable stone chairs

... Wellbeing...



Heat promotes many health-promoting processes. One of the most important effects of heat is the deep relaxation of body and mind.

The feeling of rest and positive influences on regeneration create the basis for intensive relaxation.

The body reacts to the effect of the heat by dilating the vessels, the heat is distributed throughout the body. A better blood circulation is achieved. The increased blood circulation improves the supply to the cells, the heart rate is increased.

Heat stimulates healthy body parts and organs to increased activity. The entire metabolism, the entire processes of decomposition and conversion of food and oxygen are stimulated. The heat penetrates deep into the skin, the lymph flow is stimulated, the self-healing powers are stimulated and hardened muscles are made supple.

The entire organism is charged with new energy and vitality.

Picture above: Two heatable Mineralit - stone loungers, model Lipari, placed opposite each other in "Kurhotel Ostseeheilbad Heringsdorf" with headrests of fine leather.

heatable stone chairs

...and Health.



In this way you can make the most of the positive effects of heat such as muscle relaxation, circulation and general well-being. This special type of heat therapy stimulates the body's own metabolism, increases oxygen transport and nutrient absorption, and can also strengthen the immune system.

Warming couches are used in combination with other measures in particular for :

- chronic joint inflammation
- muscular tension
- ankylosing spondylitis
- Arthroses

Our heatable stone loungers are the optimal solution for particularly individual furnishing and well-being requirements. They stand both individually and in combination for an exclusive taste.

heatable stone chairs

product information



Katla

Dimensions approx.:
L 175 x B 76 x H 90 cm

Talan

Dimensions approx.:
L 180 x B 105 x H 88 cm



Meru

Dimensions approx.:
L 120 x B 105 x H 88 cm

heatable stone chairs

Banda

Dimensions approx.:
L 175 x B 75 x H 135 cm



Polima

Dimensions approx.:
L 180 x B 105 x H 100 cm

Lipari

Dimensions approx.:
L 200 x B 105 x H 85 cm



product information

heatable stone chairs

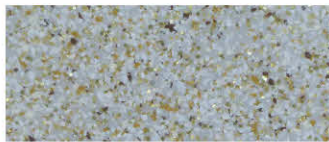
Interface design

The individual production of Mineralit stone loungers allows for maximum freedom of design. In addition to standard decors, a wide range of RAL colours can be produced.

If an individual colour coating is required, this should be determined in advance with the customer and samples should be taken* if necessary.



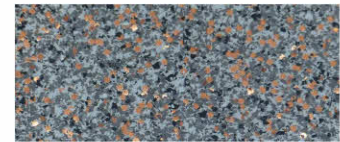
In addition, it is also possible to incorporate individual patterns and colour nuances, up to the incorporation of entire lettering or logos. Of course, corporate design templates of companies, associations, hotels or communities can also be implemented individually.



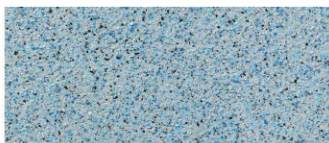
gold



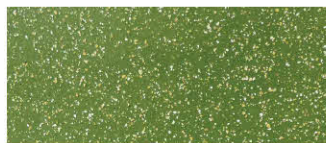
silber



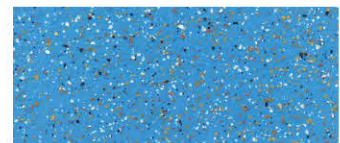
bronze



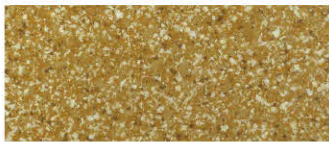
grau/blau



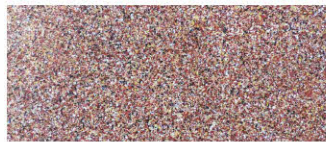
grün/braun



blau/braun



hell braun



monzonit



gran canaria

*(Any costs incurred for sampling will of course be offset against the order when the order is accepted.)

heatable stone chairs

Transport information

Our stone loungers are delivered securely packed on wooden pallets.

As the heatable Mineralit stone loungers are mainly made of natural quartz sand, they have a weight similar to natural stone. The largest of our models (Lipari) weighs about 300 kg, the Talang and Banda models weigh about 150 kg.



For a non-binding offer or individual productions, please contact us by phone, fax or e-mail.

heatable stone chairs

date:
Januar 2020

Contact

Mineralit - Mineralgusswerk Laage GmbH
Heinrich - Lanz - Strasse 4
18299 Laage

Telefon: 03 84 59/ 6 61 - 0
Fax: 03 84 59/ 6 61 - 23
eMail: kontakt@mineralit.info
www.mineralit.info